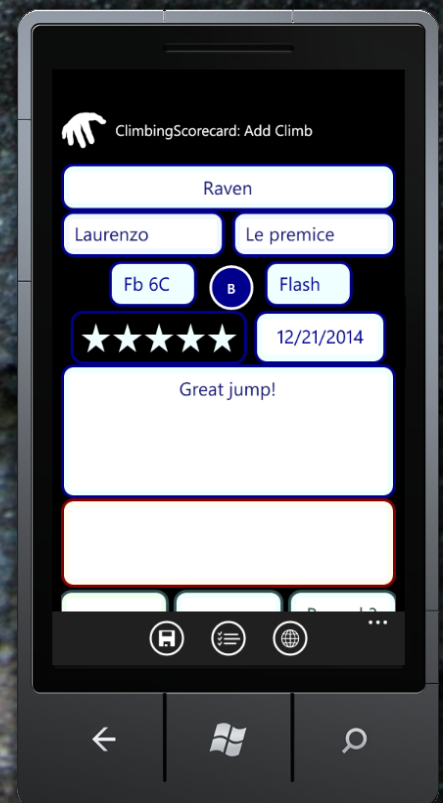


# Climbing Scorecard

## User Manual



Windows Phone



# Contents

---

- Introduction..... 3**
- Adding / Editing a Climb ..... 4**
- Browsing..... 5**
- About..... 6**
  - Privacy Statement ..... 6
  - Author..... 6
- Climbs Database..... 7**
  - Import Notes ..... 8
  - Import Step-by-Step ..... 9
  - Import Future ..... 11
- Android App..... 12**

# Introduction

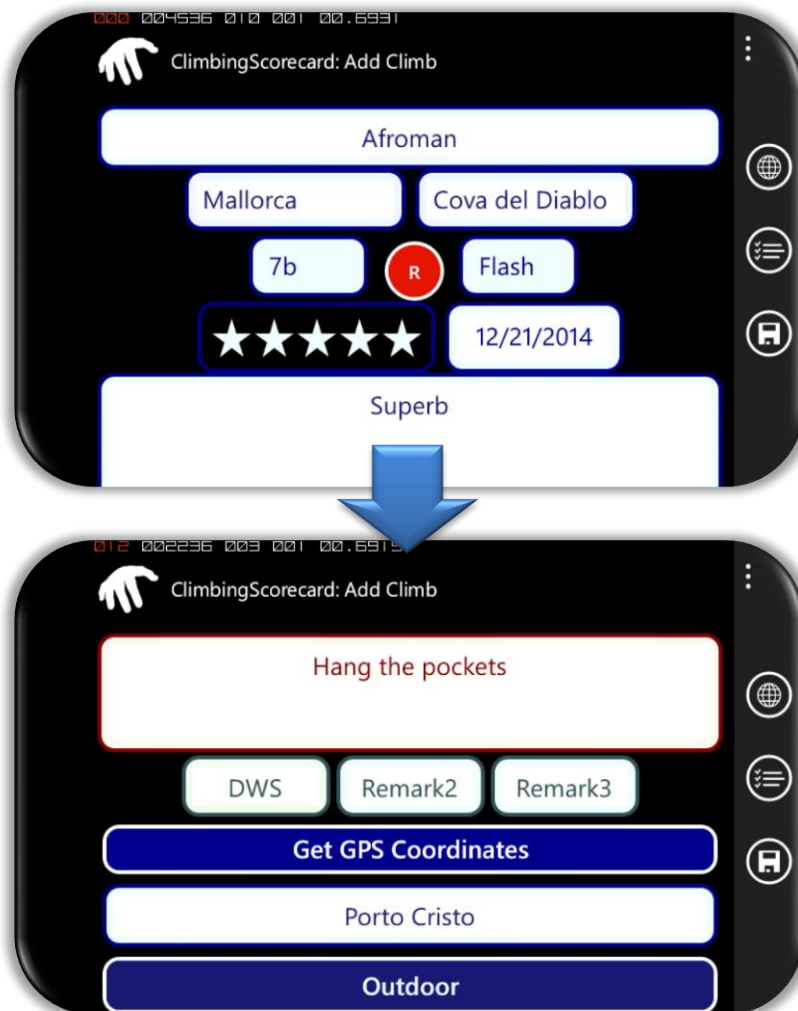
Every climber makes notes on what he has climbed. Notes, not only in his memory or on his damaged skin, but notes in his personal diary. In recent years, there have been many great websites to store personal climbs, which furthermore increased the sharing interaction between users. Based on community suggestions, everyone can profit. Examples include accurate grades and ratings, as well as helpful comments. At the same time there has been raising concern in a global scale about the private sphere one has. Hiding personal ascents is in contradiction with building up an open community climbs database. Thus everyone is exposed. Examples include automatic bots that are sniffing public databases and use those for bad purpose.

At this point, Climbing Scorecard or Climbing Diary represents tool to keep track of personal ascents. One can import or export its data locally and create his own database. By doing this one can decide, whether and what part of his ascents information he would decide to share. It could be used as a complementary tool, where each climber can freely enter whatever data he likes, despite some of this data can be sensitive so he would regret sharing it honestly online.



# Adding / Editing a Climb

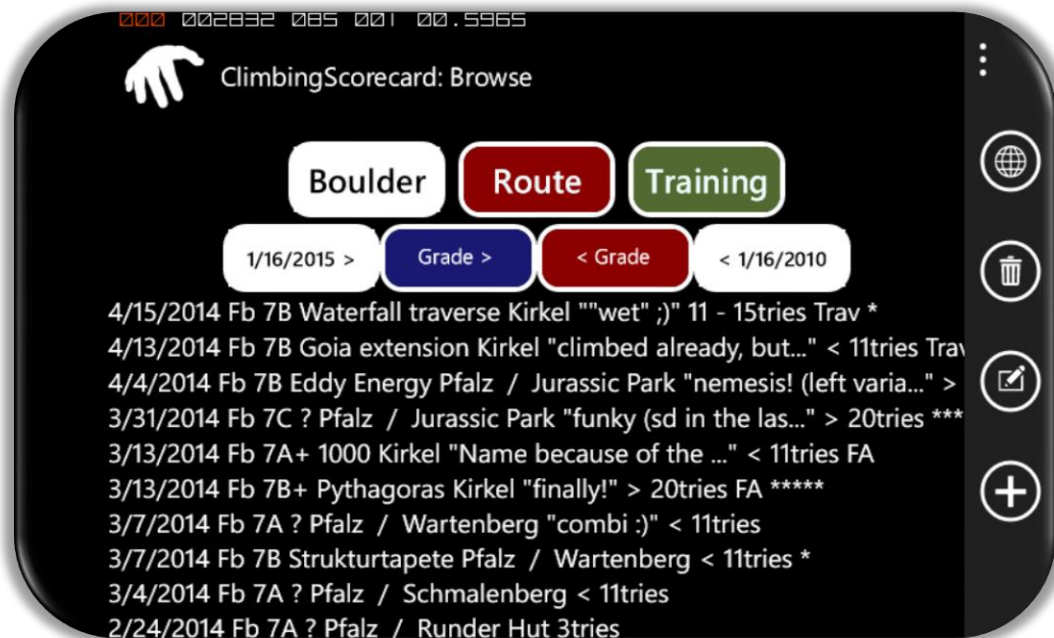
Adding or editing a climb is pretty straight forward and happens by entering the climb's data. You should note however that adding a climb with default name won't work. The duplicate check is done by checking whether there exists climb with same name and crag as the currently entered.



You should know that if you leave empty space in some of the containers it'll be replaced by its default value. The latter will make sorting on your computer easier 😊

# Browsing

In browsing mode you are able to see your climbs. You can see Boulders and Routes separately as well as together. By clicking the training toggle button, you'll see climbs, which you have entered as training (indoor).



After selecting some climb you can decide to edit or remove it. Other navigation options include adding a new climb and going to the about page, where you can access the advanced climbing database topic.

# About

---

ClimbingScorecard is currently available in Windows Phone Marketplace ☺



## Privacy Statement

---

The app doesn't connect to internet at all, thus doesn't store any personal information somewhere. The only connection happens when one clicks the official website link to see the website for whatever reason like reading this manual. The app attempts to access the coordinates of the phone if the user wants to store those during climb addition.

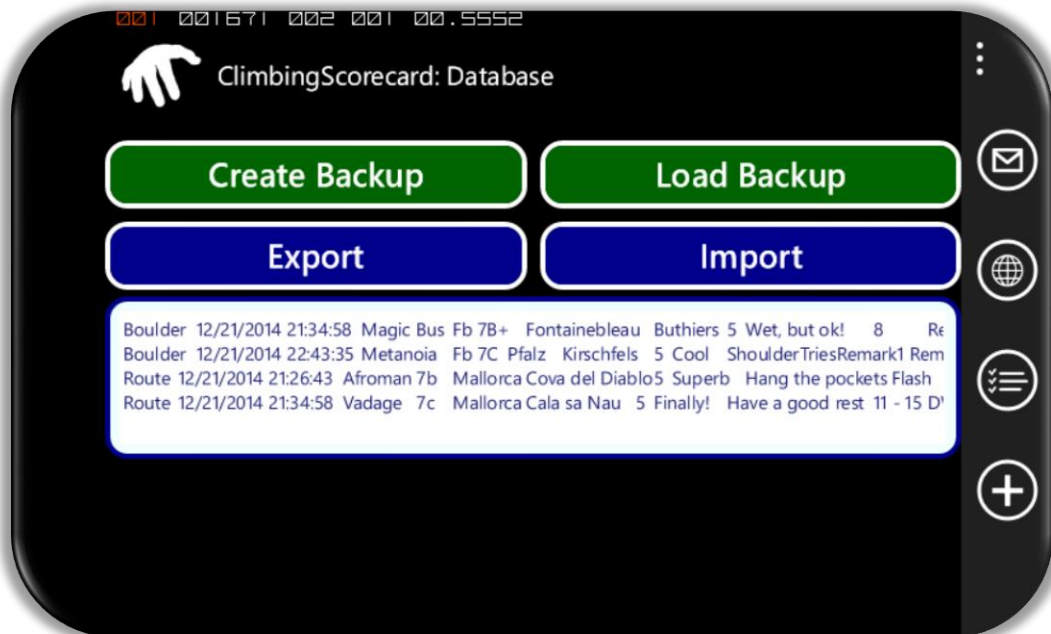
## Author

---

Climbing Scorecard is fully developed by Svilen ([www.svilen.info](http://www.svilen.info)). Its official website, where you can find useful stuff like this manual is [www.svilen.info/climbingscorecard](http://www.svilen.info/climbingscorecard). For any bug or whatever write email on my name at live.com

# Climbs Database

When you save your climbs they are all stored with their corresponding values in a simple tab delimited text file in your phone application isolated storage. Since you already may have somewhere stored climbs the app provides a pretty straight forward way to import them via pasting them to the import text block.



The exact import Format is shown in the ClimbingScorecard.xlsx from the website. Be aware to set your cells to wrap text. E.g. don't include new lines in the cells, because this will crack the parser, which adds climbs separated by new lines. Also keep in mind that the standard values won't be displayed when browsed with the phone.

# Import Notes

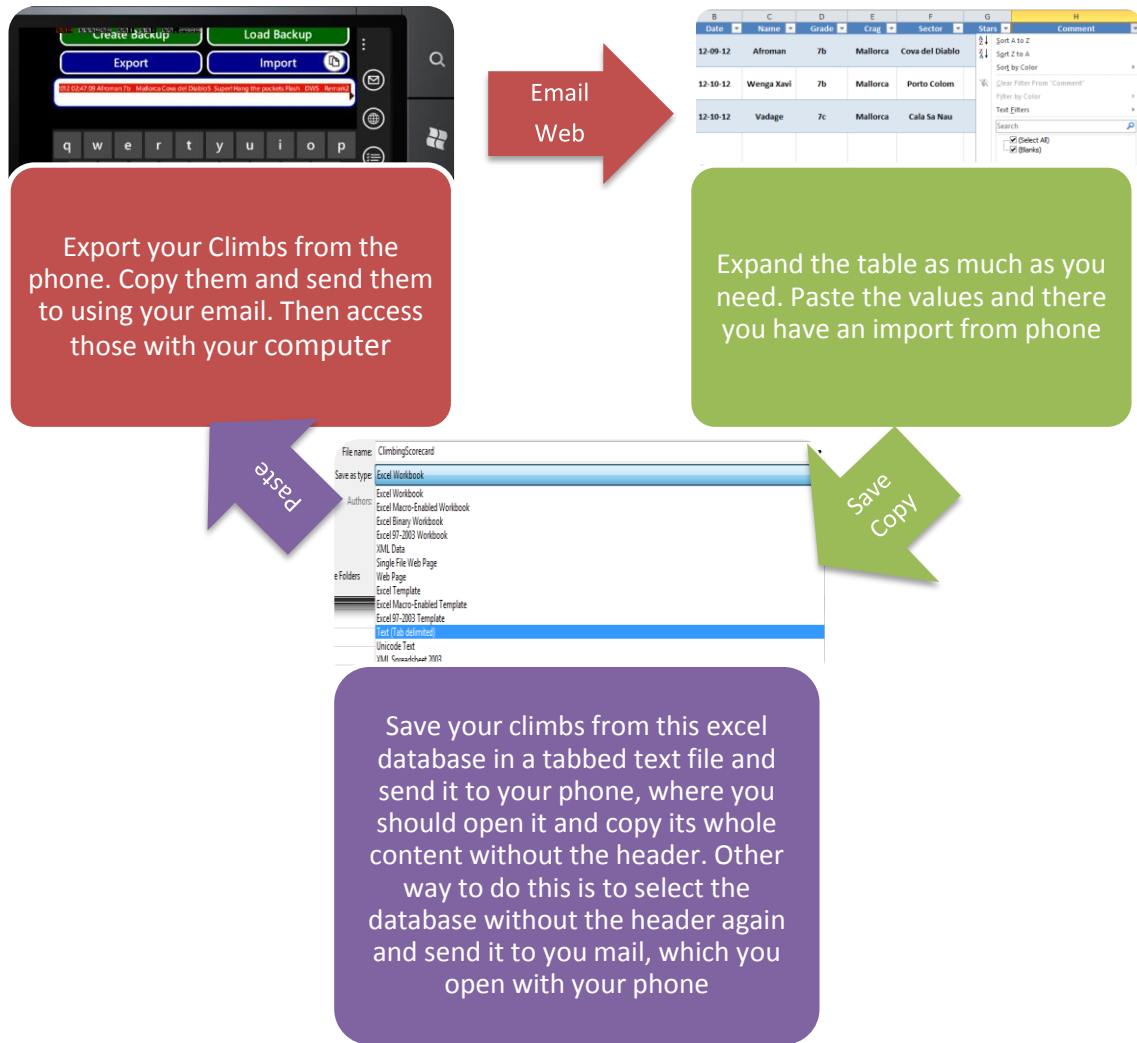


Illustration of the process of import export between computer held database and phone stored one

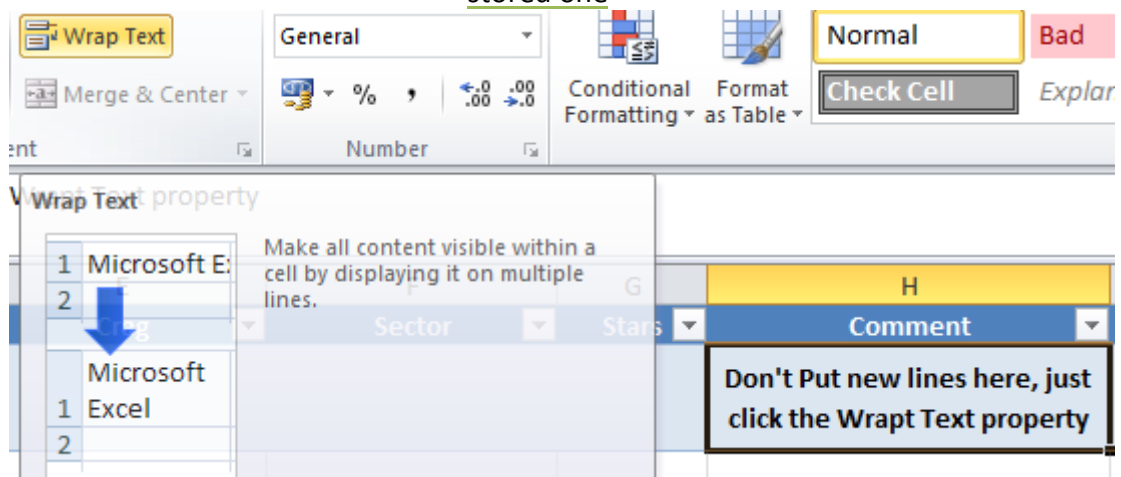


Illustration of setting up the Wrap Text property for convenient view of all cell contents



## Import Step-by-Step

---

Here I'll cover how to import climbs from your local database to your phone database. For this purpose I'll use MS Office 2010 Excel and Word. However, you can use whatever similar programs for your purpose, since the using of those two blasted me off with dozens of bugs.

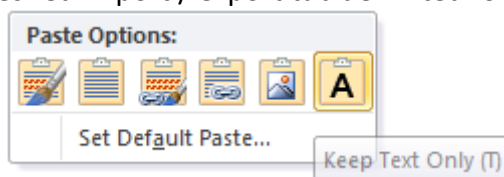
Ok, so before starting, I'll assume you've somehow imported your climbs similar to the sample format shown in the website. This is usually the hardest step if you are ought to import your climbs from some website, like 8a.nu / 27crag / sendage, because none of those has any export option. Nevertheless I got 200 ascents imported from 8a.nu to the desired format in one hour, while the same import size from 27crag took just 5 minutes due to simple reordering of columns in excel after copy-paste. You can visit my personal website for a tutorial how to do this or checkout the climbing scorecard video channel for a sample procedure including this step-by-step.

So with having your climbs database to the right format, the first step will be to add a delimiter of "<tab>;" in the end of each ascent. In excel you just add a column containing only ";;".

Remark3	Coordinates	Delimiter
		::
		::
		::
		::

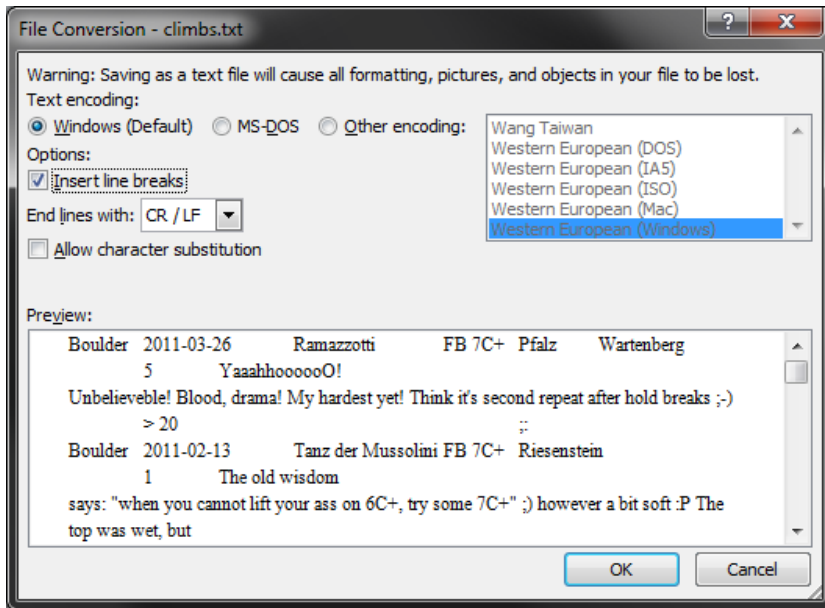
Adding a delimiter at the end

In excel, after adding the delimiter select all of your climbs (ctrl+a) and cope those (ctrl+c). Then in Word paste those with selecting paste options "keep values only". This will add all your ascents in the desired import / export tab delimited format.



Setting up to keep the text only

Then save those as a plain text with options for line breaks for your convenience.



### Plain text saving options

Then you send this text file to your phone using some software or just by email. Note that you can skip all of the MS Word steps and just paste your stuff in your email as content. You can skip also the MS Word steps by just saving the Excel file as "Text (tab delimited)", which I avoid since Excel starts working thereafter with the text file, which don't want.



Start your phone and open the data you sent and copy it to the clipboard



Then paste those in the import text box and enjoy your climbs in the browse page!

## Import Future

---

All of the import step-by-step would be one single step if the windows policy for file opening wasn't forbidden. The only way to do so is to work around using some stuff like SkyDrive. So soon I'll implement SkyDrive connection and you'll import your climbs in one click. Thus having your climbs and stuff synchronized with your computer.

# Android App

The Android App is a light version of the current Windows Phone app, which still doesn't support importing climbs. In near future this will be changed. The rest of the functionality is the same as in the windows phone version, with the small exception of accessing coordinates of the phone, which will come later on as well. One can also sort his climbs by date and select those only from certain date by selecting the from – to date buttons.

